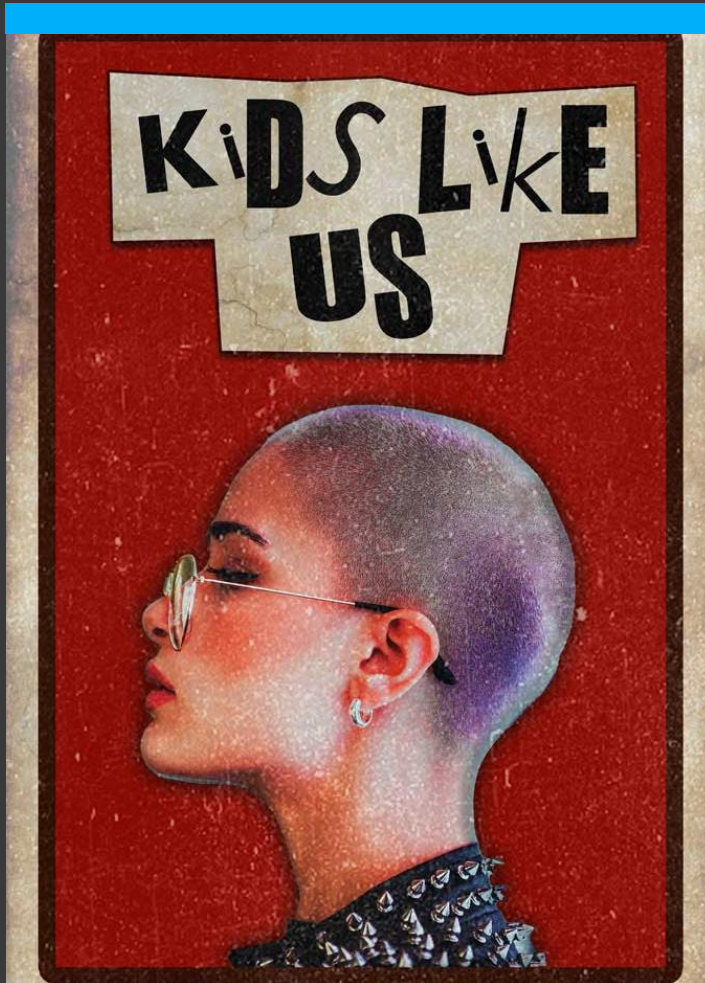


KIDS LIKE US

Punk rock. Small town. One last middle finger.

LOGLINE: When a riot grrrl's gangster father kicks her out of the house, she hatches a plan to throw him one last middle finger. Across town at Punk Fest, a ragtag group of her friends face the highs and lows of teenage life.



FEATURE (COMEDIC ADVENTURE)

KIDS LIKE US

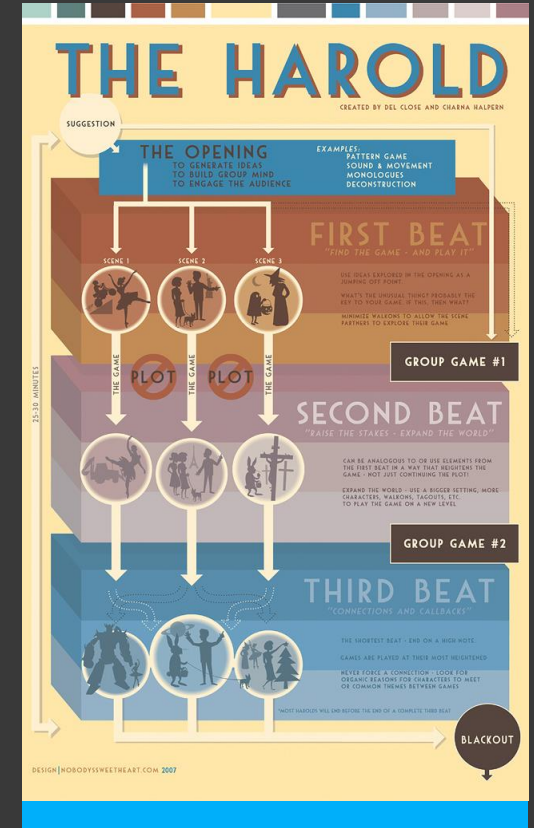
POP PUNK IN A SMALL TOWN.

Set in a small town with a thriving local music scene, **Kids Like Us** follows a group of young punks coming to terms with growing up. In the tradition of 90s ensemble teen comedies, **Kids Like Us** tells the story of the day a group of friends deciding what the hell they want to do with their lives. Who will stay in town working at The Koffee Shop for minimum wage? Will any of them escape the pull of “Everly Heights Magnet?” By the end of the day, every character in this “found family” of punk rockers will make decisions that will impact the rest of their lives.

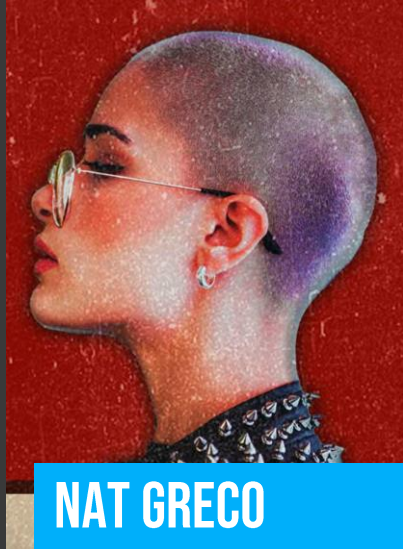
KIDS LIKE US
A DAY IN THE LIFE

COMING OF AGE IN THE 90S.

Kids Like Us started life as a TV pilot called **The Koffee Shop**, a workplace-centered anthology series built on The Harold improv format. Every episode took place at the titular coffee shop and would feature different kinds of stories about the different customers, intercut with little comedy sketches featuring the baristas inside. Readers said they loved the Nat character and the stories from Punk Fest side a group of characters tell in the last act, so I expanded the pilot by writing two additional “Harolds” to dive deep on Nat’s conflict with her homophobic father and show what happened at Punk Fest.



THE MAIN PLAYERS



NAT GRECO

THE HOMELESS PUNK

After her dad kicks Nat out of the house for being gay, she moves in with her skinhead friend Postal and tries to get a promotion at The Koffee Shop while she figures out how to strike back and survive.



GEORGE GRECO

THE MOBSTER FATHER

George is a mobster who controls the drug trade in Everly Heights. A man obsessed with tradition, he doesn't take it well when he finds out his daughter Nat isn't exactly straight.



POSTAL

THE SKINHEAD

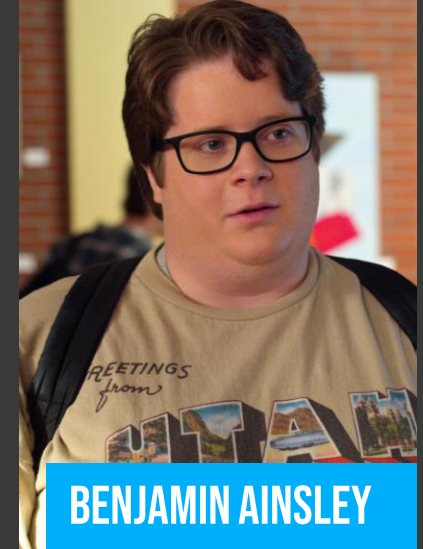
Nat's friend, a proud S.H.A.R.P. (Skinheads Against Racial Prejudice). When he's turned away at Punk Fest, Postal hatches a plan to sneak in anyway.



JEREMY HAHN

THE THEATER KID

A geek-made-good, Jeremy has taken the local theater world by storm. He even has a girlfriend named Angela. When her eye wanders, he'll have to decide what he really wants out of life.

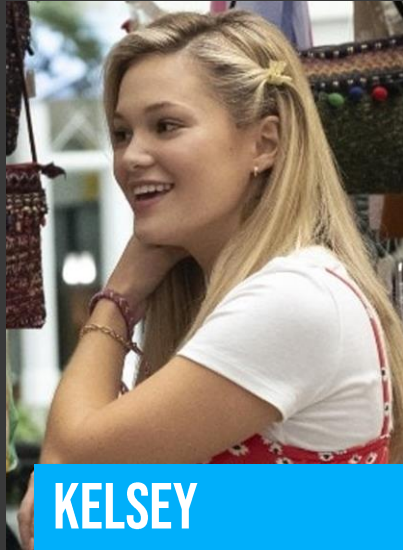


BENJAMIN AINSLEY

THE NERD

Jeremy's best friend. An awkward computer nerd who enjoys sharing drugs with others down at the walking bridge. He resents Jeremy for getting popular, but doth Benjamin protest too much?

SUPPORTING CHARACTERS

**KELSEY**

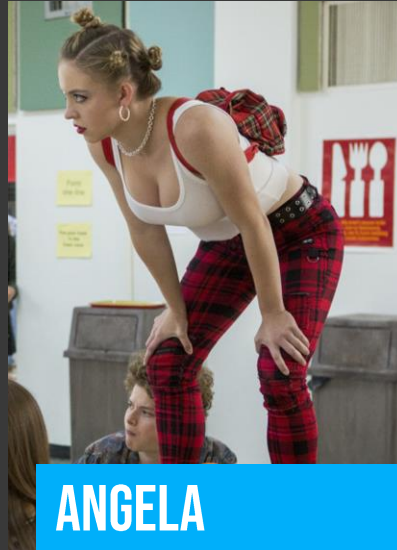
THE NEW BARISTA

A daughter of strict Christian parents and the latest barista at The Koffee Shop, a job she got because it reminds her of Central Perk on **Friends**. As Nat trains her, she catches feelings her parents would NOT be okay with.

**TINA & JOSIE**

THE FOUND FRIENDS

Without tickets to Punk Fest, the two friends head to The Koffee Shop and meet up with Benjamin, who takes them on a spiritual psychedelic adventure.

**ANGELA**

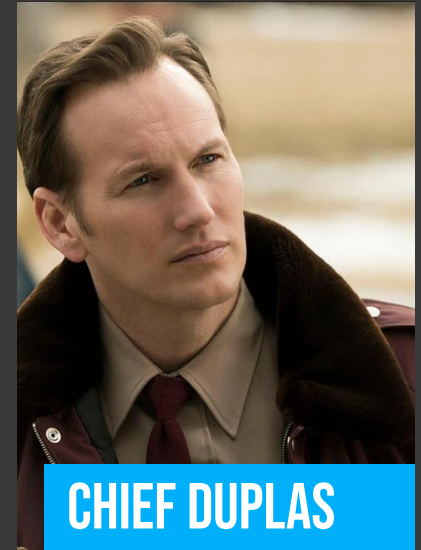
THE GIRLFRIEND

Angela's mom always told her not to get tied down, which is why she's planning on breaking up with Jeremy at Punk Fest. Will he let her fall into Travis's arms without a fight?

**TRAVIS**

MR. STEAL YOUR GIRL

Travis is a country boy who usually stays out of the city, but when a broken truck brings him into town, a cute girl named Angela convinces him to stay and attend his first punk show.

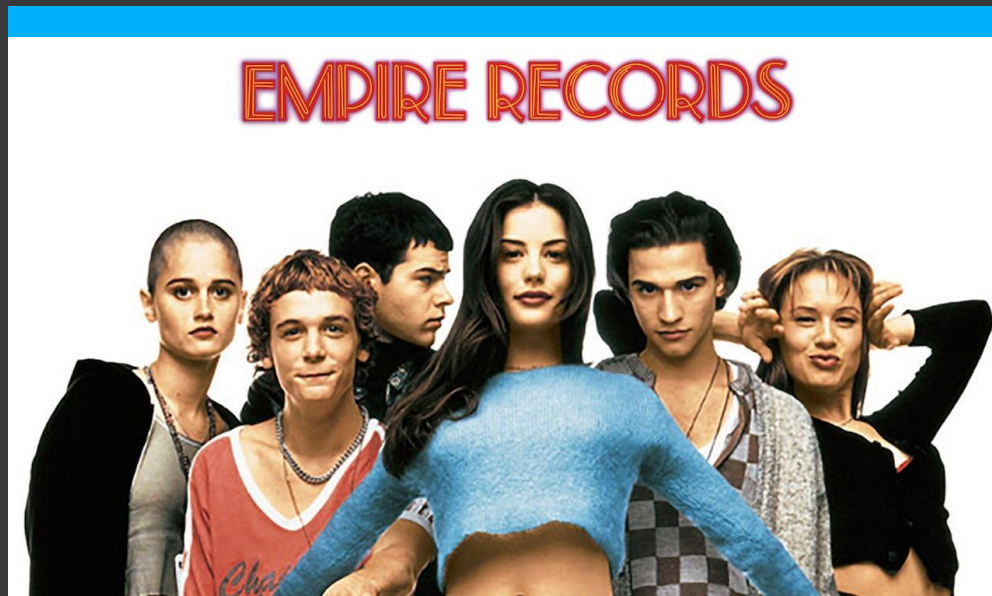
**CHIEF DUPLAS**

THE BAD COP

The Everly Heights police chief has always had it out for punks like Peter Postal. Will he catch Postal slipping, and what will happen to Postal if he does?

KIDS LIKE US

COMPARABLES



EMPIRE RECORDS

LIKE EMPIRE RECORDS AND CLERKS, KIDS LIKE US TAKES PLACE IN THE COURSE OF ONE DAY. PUNK FEST SERVES AS THE “REX MANNING DAY” THAT UNITES OUR CHARACTERS.



CLERKS

THE KOFFEE SHOP CREW’S SETTING AND STORY WERE INSPIRED BY THE JADED DISAFFECTED QUICK STOP EMPLOYEES IN KEVIN SMITH’S INDIE CLASSIC CLERKS.



ABOUT THE WRITER

BILL MEEKS



bill@billmeeks.com



407-960-0734



billmeeks.com

Bill Meeks is a writer, performer, and video producer in Los Angeles, CA. Previously, he created and starred in the audio sitcom **The Fakist: One Last Day**, studied and performed improv in Orlando, and hosted internal podcasts and video training for **AT&T** and **Hearst Television**. He's published several books, including the **Dogboy Adventures** series, **Trials of King Sparrow**, and the non-fiction book **Fan Podcasting: The Complete Guide** based on seven years producing Parsec Award-nominated fan podcasts about his favorite movies and tv shows.